



ANNUAL WORKFORCE & ECONOMIC DEVELOPMENT CONFERENCE

Thursday, October 1, 2009
Baltimore Convention Center

Sponsorship Packet

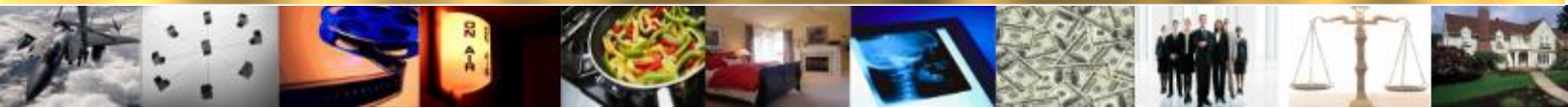
Contents

Conference Overview	2
Important Dates, Schedules & Deadlines	3
Tentative Agenda	3
Exhibit Hall / Convention Layout	4
General Sponsorship Opportunities.....	5
Detailed Sponsorship Opportunities.....	6
Educators Serving the Community Awards.....	9
Young Innovators Industry Competitions.....	9
Error! Bookmark not defined.	
Conference Marketing	10
Conference Registration Forms.....	11

Presented by

EDUSERC

EDUCATORS SERVING THE COMMUNITY



Conference Overview

In response to the number of concerns in our country related to jobs, our economy and solvency amongst businesses and communities, it has become a priority of EduSerc to organize a conference to target those industries and solution providers to help us make it through these tough times.

Therefore, the **Annual Workforce & Economic Development Conference (AWEDC)** was designed to develop robust industry solutions for our educational system, economy, community and small business community to help people gain access to quality employment opportunities, prepare them for the world of work, and help design long term solutions for our communities, businesses, schools and government to prevent our country from workforce and economic struggles.

As a result, this conference will focus on the following industries (at a minimum):

- Culinary & Hospitality
- Engineering / STEM
- Medicine
- Legal / Law
- Finance / Accounting
- Information Technology
- Business / Entrepreneurship
- Property Management
- Media / Communications

PLEASE NOTE: If you are interested in seeing your industry represented at this event, this is more of a reason to become an EduSerc partner and/or sponsor of the Annual Workforce & Economic Development Conference.

Objectives and Goals

The overall objective of this event is to unite community stakeholders and key players in workforce & economic development to help identify, design and implement short and long term solutions for specific industries.

The overall goal is to develop a robust network of solution providers and community leaders to help mobilize the solutions designed as a result of the industry forums and interactive sessions at this conference.

Who should sponsor this event?

Companies that have a specific interest or stake in the following areas:

- Career opportunities to promote to the general community
- Companies looking for candidates for open positions
- Organizations looking to provide workforce development training or opportunities
- Organizations looking to host series of workshops, forums or sessions to develop workforce or economic solutions for a particular industry at the conference
- Organizations interested in marketing to other industry professionals, government agencies, small businesses and educational institutions
- Colleges looking to promote their workforce development programs to the general community.

Target Audience

- Industry Professionals
- Collegiate Leaders and Recruiters
- Small & Large Businesses
- Diversity Managers
- Non Profit Organizations
- School System Leaders

Expected Attendance (as of July 2009)

Over 100+ are expected to attend this event from the Baltimore – Washington DC area at a minimum. This event is promoted nationally, therefore, there is a potential a large number of participants in attendance.



Important Dates, Schedules & Deadlines

Conference Dates:
Thursday, October 1, 2009
8:00 a.m. – 4:00 p.m.

Conference Website:
<http://www.eduserc.org/awedc>

Conference Location:
Baltimore Convention Center
One West Pratt Street
Baltimore, MD 21201

General Conference Email: awedc@eduserc.org **Early Bird Utility Price Deadline:** Sep 9, 2009

Registration Deadlines:
Exhibit / Sponsor Deadline: Sep 23, 2009 (received by 5pm)
Early General Registration: Sept 25, 2009 (received by 5pm)
(Note: Online registration closed Sep 26 – Sept 30)



Tentative Agenda

Workforce & Economic Development

Career & Professional Development*

	Thursday, Oct 1	Friday, Oct 2*	Saturday, Oct 3*
Theme ->	Strategic Development	Opportunities / Training	Community Development
8:00 a.m. – 9:00 a.m.	Registration	Registration	Registration
9:00 a.m. – 9:20 a.m.	Opening Session	Opening Session	Opening Session
9:30 a.m. – 10:20 a.m.	Industry Forum I	Career Workshop I	Community/Mentor Training I
10:30 a.m. - 11:20 a.m.	Industry Forum II	Career Workshop II	Community/Mentor Training II
11:30 a.m. – 12:30 p.m.	Lunch / General Session Workforce & Economic National Update	Lunch / General Session Community Scholars Lunch	Young Innovators Lunch (invitation only)
11:30 a.m. – 3:00 pm.	Workforce Diversity Fair	Career & Resource Fair	Community Fair / Expo
1:00 p.m. – 3:00 p.m.	Industry/Workforce Training	Industry/Workforce Training	Young Innovators Games
1:00 p.m. – 2:20 p.m.	Strategic Planning Session I	Prof. Development Session I	-
2:30 p.m. – 4:00 p.m.	Strategic Planning Session II	Prof. Development Session I	-
6:30 p.m. – 10:00 p.m.	-	-	"The EduSerc Awards"

* **PLEASE NOTE:** Friday & Saturday's agenda on October 2 – 3, 2009 pertains to the **Annual Career & Professional Development Conference**. You are more than welcomed to register, participate, exhibit, sponsor or support this event as this is connected to the overall mission of "Workforce & Economic Development."

Friday and Saturday, October 2 – 3, 2009 will concentrate on the general community's interest to learn more about specific career fields and receive more professional development training in support of the **Annual Workforce & Economic Development Conference**.

EduSerc Conference Contacts

Mail/Fax Registration To:

EduSerc, Inc.
P.O. Box 2536
Laurel, MD 20707
(301) 498-2899
(301) 362-4360 (fax)

Contact:

Anisha Lewis
EduSerc Conference Development
(301) 498-2899 ext. 107
Anisha.Lewis@eduserc.org

Yvette Smith

EduSerc Community Relations
(301) 498-2899 ext. 105
Yvette.Smith@eduserc.org

For more information on:

Exhibiting, Sponsorships, Registration Details (Individual & Group)

Workshop Speakers, Volunteering Partnership Opportunities, Agenda

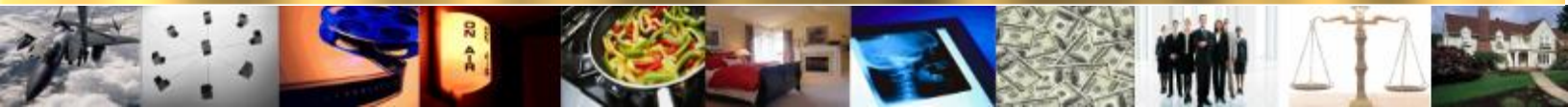
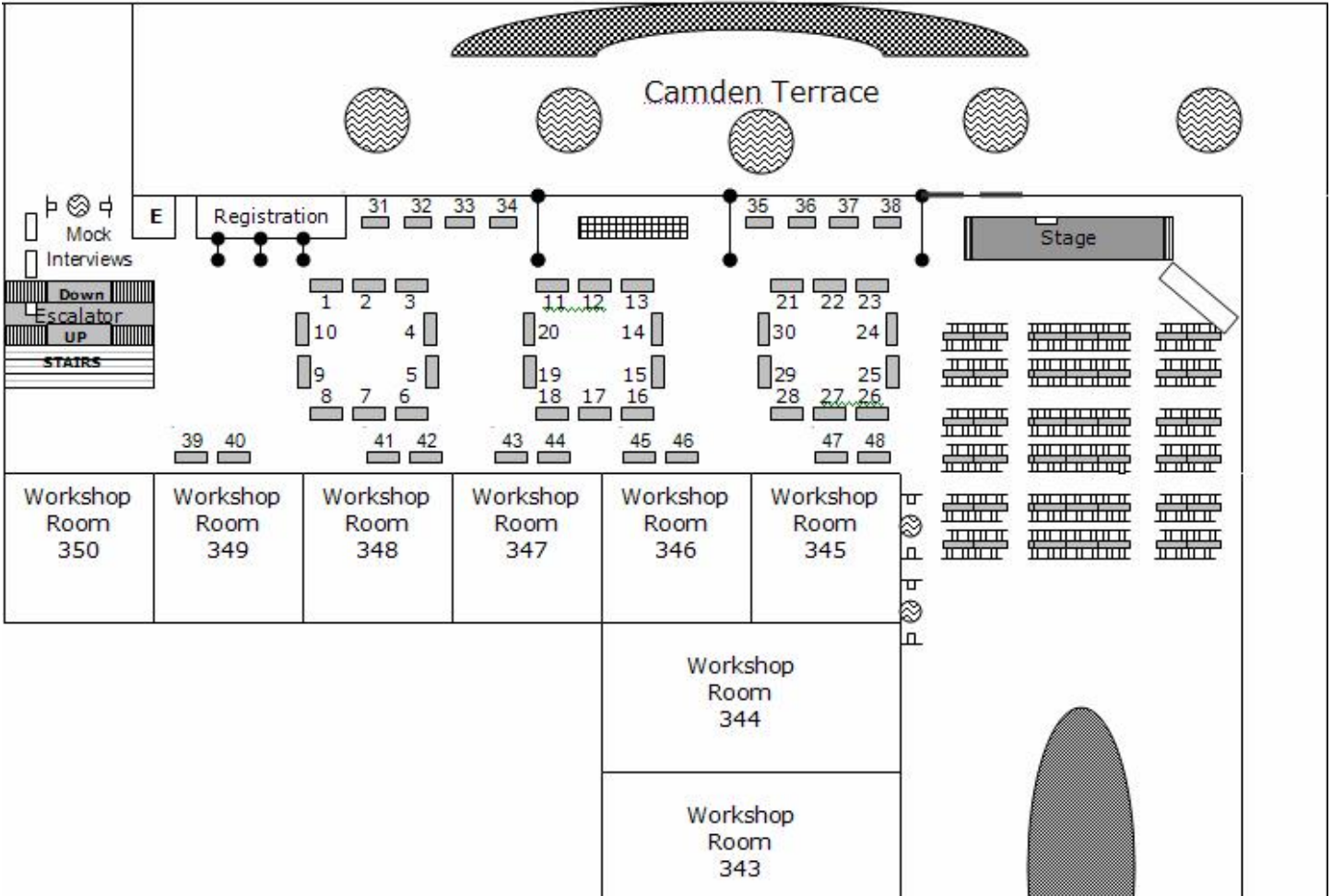


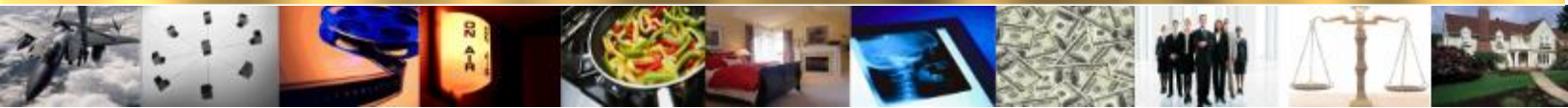
Exhibit Hall / Convention Layout



Baltimore Convention Center
Camden Lobby Side

Below is a tentative diagram of the exhibit hall area. The "numbered" spots are exhibit table locations.





General Sponsorship Opportunities

There are various sponsorship opportunities to help you market your products, services, vision, initiatives or employment opportunities with the AWEDC. When you participate as a sponsor of the conference, you are eligible to participate in a number of other activities being hosted at the event.

Overall Conference Sponsorship Levels



General Conference Sponsorship Levels	Contribution tax-deductible	Benefits							
		Web & Magazine Recognition & Banner at Event	EduSerc Awards Gala Tables (10 per table)	National Magazine & Program Booklet Advertisement (color)	# of Exhibit Booth Spaces (includes 2 registrants)	Continental Breakfast Sponsorship	Speaking Opportunity & Product Inserts in Conference bags	Additional Convention Admissions (one day / full)	Training Scholarship Contribution <u>Amount</u> * indicates company-named scholarship
Ultimate	\$50,000	✓	5	(2) Two-page spread	5	✓	✓	50 / 25	\$10,000
Diamond	\$30,000	✓	4	Two-page spread	4	✓	✓	40 / 20	\$7,500
Platinum	\$20,000	✓	3	1 full pg	3	✓	✓	30 / 15	\$5,000
Gold	\$10,000	✓	2	½ pg	2	-	✓	20 / 10	\$2,000
Silver	\$5,000	✓	1	¼ pg	1	-	-	10 / 5	\$1,000
Bronze	\$2,500	✓	-	Business Card Size	1	-	-	5 / 2	\$500



Detailed Sponsorship Opportunities

You have the option of selecting only one or other types of sponsorship opportunities as well. Please review all specific ways on how you can sponsor the conference.

NOTE: Non profits include colleges, military/government agencies, community-based organizations and federal recognized 501(c) organizations

Conference Magazine Advertisement

One of the long lasting impressions you can make is by sponsoring an advertisement in our national magazine. This magazine serves as our conference brochure where every participant will receive this publication with other important community based information. Over 2000 recipients of this publication nationwide receive viable information related to their careers, professional development and other opportunities.



Page Size	1X		Viewable Dimensions
	Color	B/W	
Two-Page Spread	\$5200	\$4800	16-3/4+W x 10-7/8+H
Inside Front Cover	\$3180	\$3020	8-3/8+W x 10-7/8+H
Inside Back Cover	\$3140	\$2980	8-3/8+W x 10-7/8+H
Full	\$2000	\$1600	8-3/8+W x 10-7/8+H
Half (1/2)	\$1000	\$800	See Dimensions Below
Quarter (1/4)	\$500	\$400	4-3/16+W x 5-3/8+H
Business Card (1/8)	\$250	\$150	4-3/16+W x 2-11/16+H

* Specific viewable dimensions are found on the sponsorship form

Conference Exhibitor

companies will receive adequate exposure by setting up an exhibit table. Attract conference participants by stating your presence at the conference. This is one of the best ways to get your name out to convention registrants.



Rate	Business	Non Profit	High Schools
▶ 1 Day Rate (Oct 1, Oct 2 or Oct 3)	\$500	\$350	Free
▶ 2 Day Rate (Any two consecutive days)	\$900	\$600	Free
▶ Full Rate	\$1300	\$850	Free

* Includes 2 registrations, 10x10space, 6x30+table, 2 chairs

Individual Training / Networking Sessions

Host your own session in conjunction with the conference theme. You'll gain more exposure and interaction with participants all in one. In addition, share in marketing expenses with EduSerc. Best deal overall!!!



Rental Rate per Room *	Business	Non Profit
▶ 1 Day Rate (Oct 1, Oct 2 or Oct 3)	\$1000	\$700
▶ 2 Day Rate (Any two consecutive days)	\$1750	\$1200
▶ Full Rate	\$2500	\$1850

Rooms include: screen, LCD projector, head table, podium, mic, staging (optional). Food catering is separate and is handled by Aramark (<http://www.aramarkconventions.com/baltimore>)

Registration / Workshop Sponsor

Become an integral part of the conference by registration computers, booths, surveys, speaker honorariums, LCD projectors, screens, lanyards, pens, signs, banners and other items for the conference. Your contribution helps keep the event professional.



Registration / Workshop Sponsor	Sponsorship
Workshop Sponsor - includes surveys, honorariums, signage, LCD projector, screens	\$1000
Registration Sponsor - includes computers, booths, lanyards, pens, and banners	\$2000
Complete Registration / Workshop Sponsor	\$2750

Luncheon Sponsor

Sponsor the conference luncheon to receive premier recognition and speaking opportunities. Or better yet, sponsor your own for your own target audience and host your own agenda! For hosting your own luncheon, contact, Anisha Lewis at (301) 498-2899 ext. 107



Conference Luncheons

Oct 1 - Workforce & Economic Luncheon Target Audience: professionals, businesses, colleges	\$15,000
Oct 2 . Career & Professional Development Lunch Target Audience: professionals, colleges, schools, youth	\$10,000
Oct 3 . Young Innovators Mentor / Mentee Lunch Target Audience: professionals, youth	\$10,000

Corporate Sponsored Luncheon

Room Rates: Please see Individual Training / Networking Sessions+Rates

Food/Beverage: All food is handled by Aramark (<http://www.aramarkconventions.com/baltimore>)



Interactive Community Sponsor

Take exhibiting to the next level by hosting a community of exhibit tables in one large area. Host a collection of booths and tables to do several things. For example:



- Showcase large interactive displays (ie. engineering models & robots, computers, internet cafés, voting booths & machines, health care screenings, etc.)
- Hosting a demonstration area with your own schedule of activities (e.g. fitness or cooking demonstrations, networking areas for faculty & staff with hors d'oeuvres, information & training stage with seating & equipment)
- Fully promote each department in your company (e.g. host interactive displays and projects that each department may have developed or youth programs, showcase industry professionals, host networking areas)
- Host on-site interviews (e.g. for academic programs, staffing positions, etc.)
- Host interactive fun areas for youth & parents to appreciate your value in the community

Benefits	Neighborhood	City
8x 10 booth space	4 - 7 booths	8 - 12 booths
Announcements over loud speaker	Included	Included
Conference bag inserts	Included	Included
1 full page color advertisement in Young Innovators Magazine (program booklet)	Included	Included
Marketing list of all conference registrants	Included	Included
One workshop room (full day)	Included	Included

Neighborhood Rates (4 – 7 booths)

Rate	Business	Non Profit
▶ 1 Day Rate (Oct 1, Oct 2 or Oct 3)	\$7,000	\$5,500
▶ 2 Day Rate (Any two consecutive days)	\$12,000	\$9,000
▶ Full Rate	\$18,000	\$14,000

City Rates (8 – 12 booths)

Rate	Business	Non Profit
▶ 1 Day Rate (Oct 1, Oct 2 or Oct 3)	\$12,000	\$9,000
▶ 2 Day Rate (Any two consecutive days)	\$18,000	\$14,000
▶ Full Rate	\$28,000	\$22,000

In-Kind Sponsor

Do you already have items you want to donate to EduSerc? You can provide free gifts for awards, sponsor scholarships, or cover an already known expense of the conference.



For more details, contact:

Anisha Lewis
 EduSerc Conference Development
 (301) 498-2899 ext. 107
Anisha.Lewis@eduserc.org

Media Sponsor

Advertise your business as a sponsor of the conference on radio media outlets! It is not too late to capitalize on the real reach that media provides.



Conference Radio Advertisements*

30 seconds / spot**	\$300
1 minute / spot**	\$500

*Commercials on Radio One supported stations
 **Recommended 4 spots per day



Workforce Development Sponsor



As the ultimate form of sponsorship, your workforce development initiatives should not be limited by a conference. EduSerc will develop a customized industry based program to recruit, train

and promote professionals to excel in the industry of your choice. With the conference serving as a key starting point, EduSerc's Training & Learning Institute (ETLI) will serve as a subunit of your organization to develop monthly training programs at our headquarters and local community jurisdictions. In partnership with your support, we do all of the work and have the technology to training the community. EduSerc is nationwide, so we can identify, train and prepare the community for your career opportunities!

EduSerc Training & Learning Institute (headquarters)

1040 West Street
Laurel, MD 20707
(301) 498-2899

<http://www.eduserc.org/etli>

How does it work?

1. Sponsor EduSerc as your Workforce Development Partner, and
2. EduSerc will identify, recruit, register and train participants weekly throughout the year toward excellence in your particular field (or we will train a target population you have identified)
3. EduSerc will provide access to our training facility and can jointly host technical training courses with your company
4. EduSerc will provide adequate professional development courses on a weekly basis for your target group
5. EduSerc will provide a dedicated community relations team and technical trainer toward your efforts in marketing and delivering the workforce development agenda.

NOTE: All courses will be made **FREE** to the public for any number of participants or participants you select. Trainings can reside onsite at your location in addition.

Workforce Development Sponsorship

Up to 5 courses/quarter -> 3 technical & 2 professional development

3 month sponsorship (5 courses)	\$30,000
6 month sponsorship (10 courses)	\$55,000
1 year sponsorship (20 courses)	\$100,000



EduSerc Award Sponsor

Recommend your organization or someone for a national EduSerc award to honor their contribution to education, workforce development, and community service. Sponsor a table for your company or another organization you'd like to recognize.



Saturday, Oct 3, 2009 6:00pm – 10:00pm	Businesses / Professionals	Educators/ Schools
Individual	\$250	\$150
Table (10 individuals)	\$2,500	\$1,500

Includes:

- ¼ page color advertisement in award program booklet
- 1 nomination application
- Logo advertisement on big screen during awards

Volunteer Sponsor

Your organization can volunteer and serve as a workshop monitor, help at registration or even market the conference. Your help is greatly appreciated

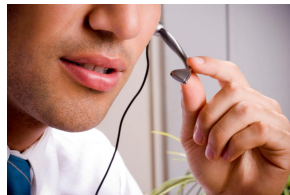


For more details, contact:

Anisha Lewis
EduSerc Conference Development
(301) 498-2899 ext. 107
Anisha.Lewis@eduserc.org

Marketing Sponsor

Don't have money to financially sponsor? You can become a marketing sponsor! By marketing the event and encouraging others to register, you can receive a booth, advertising space, and other benefits that financial sponsors receive! Sign-up as a marketing sponsor and start receiving benefits of financial sponsors!



Marketing Sponsorship Table

Benefits	# of Registrants	20	40	60	80	100+
(1) Free Individual Registration		✓	✓	✓	✓	✓
(1) Exhibit Table		-	✓	✓	✓	✓
¼ Page Advertisement		-	-	✓	✓	✓
Corporate Logo on Conference Big Screen		-	-	-	✓	✓
(1) EduSerc Awards Table		-	-	-	-	✓

How does this work?

1. Sign up as a marketing sponsor to receive a marketing sponsor code.
2. Attached our sponsored by logo on your website and/or send marketing emails to your friends through our interface
3. When registrants use your sponsor code, you get credit and can receive additional benefits for you!



Educators Serving the Community Awards

Saturday, October 3, 2009
Baltimore Convention Center

6:30pm – 8:00pm
8:00pm – 10:00pm

Reception & Dinner
Awards Show (Taped Live)



Background

The Educators Serving The Community Awards (a.k.a The EduSerc Awards) is the first red carpet, black tie affair that honors educators in our country for their excellence in education, community service, and advancements in the community. Founded in 2004, this awards ceremony is designed to improve the image of educators and highlight the value of education in the United States. It is a valiant effort to place emphasis on the important things in our community like education. This awards show and ceremony is hosted to promote the “good” things happening in our community. As a result, our hope is that more citizens will be encouraged to dedicate their lives to education and improving the quality of life in their communities.

This event is a fundraiser to help EduSerc provide career & professional development resources to young people around the country.

Award Categories

- Educator Industry Awards
- Educator Serving the Community Awards
- Role Model / Mentor Awards
- Principal Leadership Awards
- Most Improved Awards
- EduSerc Image Awards

Targeted Audiences

- Individuals / Educators
- Schools / School Systems
- Non Profits
- Colleges / Universities
- Corporations
- Government / Military

Nomination Process

Anyone can submit a nomination for any category for eligible candidates that have made significant contributions in education in their respective area. Below are the steps to nominate someone:

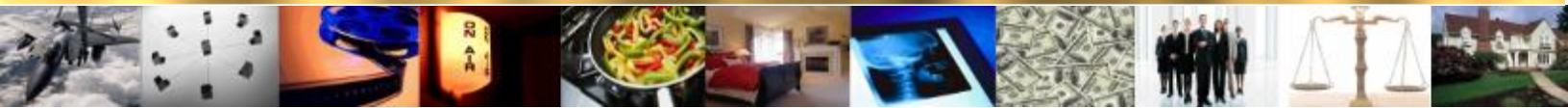
Complete a nomination award application (found at <http://www.eduserc.org/awards>) for each award category you intend to submit with the required documentation specified for each category

- Submit five (5) copies of each award application
- Provide a tax-deductible fundraising contribution of \$50 (Made payable to EduSerc, Inc.) for each award category you are submitting
- Send to EduSerc Awards 1040 West Street, Laurel MD 20707

Nomination Deadline: September 18, 2009 (received, not postmarked)

Fundraising Tickets:	(Schools/Colleges)	\$150/person	\$1500/table of 10
	(Corporations)	\$250/person	\$2500/table of 10

NOTE: Table sponsorship includes submission of someone of your choice for an award category.



Conference Marketing

Since 2003, EduSerc has hosted this conference at the Baltimore Convention Center in conjunction with Mayor Martin O'Malley's Administration and many other corporate sponsors. The conference attracts over 400 participants from a variety of sources within the Washington D.C. and Baltimore metropolitan area, where the primary participants have been middle and high school students.

Comcast Newsmaker Edition – CNN Headline News

Comcast provides media in-kind sponsorship on the Comcast Newsmaker Edition, an local extended news segment of CNN Headline News. Every year before the awards, the Executive Director is interviewed on Comcast about the awards ceremony and all activities that are sponsored. Sponsorship covers all Comcast customers over 5 counties in the state of Maryland.

Radio One Advertisement

Advertisements and promotion to over 1,006,700 listeners in the national capitol region over several radio stations: Praise 104.1 (Home of Yolanda Adams Morning Show); WKYS 93.9 (Home of Russ Parr Show); Majic 102.3 (Home of the Tom Joyner Morning Show)

School System Partnerships

EduSerc maintains partnerships with several schools and school systems in the Washington D.C. and Baltimore metropolitan area as well as relationships with schools in the Central Georgia area. With EduSerc's strongest partnership residing with the Baltimore City Public School System, we are able to effectively coordinate the advertising and marketing of resources related to the conference to all principals, counselors and students.

Other school systems targeted are as follows:

- Howard County Public School System
- Anne Arundel County Public Schools
- Prince George's County Public Schools
- Washington D.C. Public Schools
- Baltimore County Public Schools

Email / Fax Blast

EduSerc sends monthly emails to over 2500 schools, business, programs and individuals across the country about the award ceremony. EduSerc sends quarterly faxes to principals, counselors, colleges and businesses all around the country about the conference.

Mail Distribution

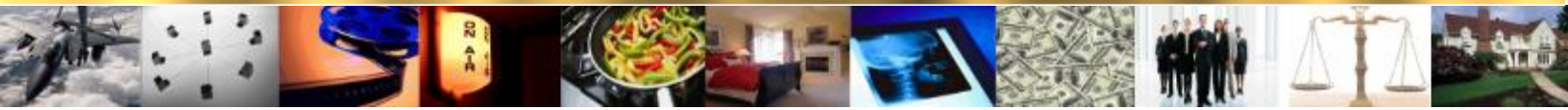
EduSerc sends quarterly mailings to schools, counselors, members and a variety of other groups.

Young Innovators Magazine

EduSerc distributes 2000 copies of the Young Innovators Magazine, which entails information about the conference, to many states in the country. The following states are as follows: Maryland, Virginia, Pennsylvania, Washington D.C., South Carolina, North Carolina, Georgia, Texas, Missouri, Wisconsin, Kansas, Ohio, and Oregon.

Quarterly Networking Receptions

In collaboration with the Governor's Office of community initiatives, EduSerc hosts quarterly receptions inviting local business owners, school principals, counselors, and college representatives to learn about partnership options related to the conference. As a result, the majority of attendees become partners that attend this reception.



Conference Registration Forms

Attached are registration forms for you to print and use for sponsorship, advertising or volunteering as a part of the conference.

Instructions: Complete this form in its entirety and mail the form to EduSerc, Inc. 1040 West Street Laurel MD 20707 or **fax the form** to 301-362-4360

1) Individual Information		2) Organization / College / Company Information (provide information about the organization you represent, if applicable)	
1a Full name		2a Organization Name	
1b Job Title / Occupation (if applicable)		2b Type <input type="checkbox"/> College/Univ. <input type="checkbox"/> Company <input type="checkbox"/> School <input type="checkbox"/> Gov./Mil <input type="checkbox"/> Org./Club	
1c Mailing Address (room, apt, suite no, P.O. box)		2c Mailing Address (room, apt, suite no, P.O. box)	
1d City, State, Zip Code		2d City, State, Zip Code	
1e Phone	1f Fax	2e Phone	2f Fax
1g Email		2g Email	

3) Referral Code (please enter referral code if applicable)

4) Other Classifications (check all that apply)

<input type="checkbox"/> College Student	<input type="checkbox"/> Industry Professional	<input type="checkbox"/> Business Owner	<input type="checkbox"/> Parent	<input type="checkbox"/> Educator/Teacher
<input type="checkbox"/> College Recruiter	<input type="checkbox"/> HR / Diversity Rep	<input type="checkbox"/> Community Leader	<input type="checkbox"/> Mentor	<input type="checkbox"/> Tutor
<input type="checkbox"/> School System Official	<input type="checkbox"/> Military	<input type="checkbox"/> Government Employee	<input type="checkbox"/> Political Official	<input type="checkbox"/> Principal / Counselor

5) Highest Level of Education Completed

High School or GED Associate Degree Bachelor's Degree Master's Doctorate

6) Career Industries (check all that apply)

<input type="checkbox"/> Architecture	<input type="checkbox"/> Cosmetology	<input type="checkbox"/> Finance	<input type="checkbox"/> Journalism	<input type="checkbox"/> Social / Human Services
<input type="checkbox"/> Arts & Entertainment	<input type="checkbox"/> Culinary Arts	<input type="checkbox"/> Government	<input type="checkbox"/> Law / Legal	<input type="checkbox"/> Sports
<input type="checkbox"/> Automotive	<input type="checkbox"/> Education	<input type="checkbox"/> Healthcare	<input type="checkbox"/> Military	<input type="checkbox"/> Other
<input type="checkbox"/> Business	<input type="checkbox"/> Engineering	<input type="checkbox"/> Hospitality	<input type="checkbox"/> Non Profit	
<input type="checkbox"/> Communications	<input type="checkbox"/> Fashion	<input type="checkbox"/> Information Technology	<input type="checkbox"/> Real Estate	

7) What do you hope to receive or need from this conference? (check all that apply)

<input type="checkbox"/> Job / Internship / Career Opportunity	<input type="checkbox"/> Hands-On Experience	<input type="checkbox"/> Summer Program / After School Program Info
<input type="checkbox"/> Networking Contacts / Candidates	<input type="checkbox"/> Scholarship / College Info	<input type="checkbox"/> Mentors / Role Models / Tutors
<input type="checkbox"/> Career Plan Assistance	<input type="checkbox"/> Workforce Development Solutions	<input type="checkbox"/> Financial Aide / Financial Mgmt Assistance
<input type="checkbox"/> Economic Dev. Solutions	<input type="checkbox"/> Personal Development Training	<input type="checkbox"/> Professional Development Training
		<input type="checkbox"/> Other

<p>8) Registration Details & Fee Select The Conference Day(s) You Are Attending:</p> <p><input type="checkbox"/> Oct 1 – Annual Workforce & Economic Development Conference (AWEDC) (Industry Prof. / Corporations/ Non Profits General Community)</p> <p><input type="checkbox"/> Oct 2 – Annual Career & Professional Development (Part 1) (ACPDC) (Industry Prof. / Corporations / General Community Non Profits / Schools / Colleges / Youth)</p> <p><input type="checkbox"/> Oct 3 - Annual Career & Professional Development (Part 2) (ACPDC) - FREE (General Community) Young Innovators Competitions & Expo</p> <p><input type="checkbox"/> Oct 3 (evening) - The EduSerc Awards Fundraiser & Show (Special Event) (Oct 3 – 6:00 p.m. – 10:00 p.m.) (black tie-red carpet awards show honoring educators from around the country)</p>	<table border="1" style="width:100%; border-collapse: collapse;"> <tr> <td colspan="2">One Day Individual Rate</td> </tr> <tr> <td><input type="checkbox"/> Oct 1 - AWEDC</td> <td>\$65</td> </tr> <tr> <td><input type="checkbox"/> Oct 2 . ACPDC</td> <td>\$65</td> </tr> <tr> <td><input type="checkbox"/> Oct 3 . ACPDC / YI Competition (9 a.m. . 2 p.m.)</td> <td>FREE</td> </tr> <tr> <td colspan="2">Two Day Individual Rate</td> </tr> <tr> <td><input type="checkbox"/> Oct 1 - 2 AWEDC / ACPDC</td> <td>\$125</td> </tr> <tr> <td colspan="2">Special Fundraising Event</td> </tr> <tr> <td><input type="checkbox"/> EduSerc Awards (Oct 3: 6pm . 10pm)</td> <td>\$250</td> </tr> <tr> <td colspan="2">Full Convention Rate</td> </tr> <tr> <td><input type="checkbox"/> AWEDC Full (Oct 1 &3-Awards)</td> <td>\$290</td> </tr> <tr> <td><input type="checkbox"/> ACPDC Full (Oct 2 & 3-Awards)</td> <td>\$290</td> </tr> <tr> <td><input type="checkbox"/> Both Conferences w/ Awards</td> <td>\$365</td> </tr> <tr> <td colspan="2">Total Registration</td> </tr> </table>	One Day Individual Rate		<input type="checkbox"/> Oct 1 - AWEDC	\$65	<input type="checkbox"/> Oct 2 . ACPDC	\$65	<input type="checkbox"/> Oct 3 . ACPDC / YI Competition (9 a.m. . 2 p.m.)	FREE	Two Day Individual Rate		<input type="checkbox"/> Oct 1 - 2 AWEDC / ACPDC	\$125	Special Fundraising Event		<input type="checkbox"/> EduSerc Awards (Oct 3: 6pm . 10pm)	\$250	Full Convention Rate		<input type="checkbox"/> AWEDC Full (Oct 1 &3-Awards)	\$290	<input type="checkbox"/> ACPDC Full (Oct 2 & 3-Awards)	\$290	<input type="checkbox"/> Both Conferences w/ Awards	\$365	Total Registration	
One Day Individual Rate																											
<input type="checkbox"/> Oct 1 - AWEDC	\$65																										
<input type="checkbox"/> Oct 2 . ACPDC	\$65																										
<input type="checkbox"/> Oct 3 . ACPDC / YI Competition (9 a.m. . 2 p.m.)	FREE																										
Two Day Individual Rate																											
<input type="checkbox"/> Oct 1 - 2 AWEDC / ACPDC	\$125																										
Special Fundraising Event																											
<input type="checkbox"/> EduSerc Awards (Oct 3: 6pm . 10pm)	\$250																										
Full Convention Rate																											
<input type="checkbox"/> AWEDC Full (Oct 1 &3-Awards)	\$290																										
<input type="checkbox"/> ACPDC Full (Oct 2 & 3-Awards)	\$290																										
<input type="checkbox"/> Both Conferences w/ Awards	\$365																										
Total Registration																											

Method of Payment American Express Master Card Visa Check / Money Order (Make Payable to EduSerc, Inc.)

Name of Cardholder: _____ Billing Address: _____

Credit Card Number: _____ Billing City/State/Zip: _____

Expiration Date: _____ / _____ Billing Phone: _____

**ACPDC/
AWEDC2009**

Rev. Sep 2009
EduSerc, Inc.

Exhibitor Registration

For Official Use:
Date Received:

Instructions: Complete this form in its entirety and **mail the form** to EduSerc, Inc. 1040 West Street Laurel MD 20707 or **fax the form** to 301-362-4360.

1) Individual & Organization Information

1a Full name

1b Organization Name

1c Job Title / Occupation (if applicable)

1d Mailing Address (room, apt, suite no, P.O. box)

1e City, State, Zip Code

1f County or municipality

1g Phone

1h Fax

1i Email

2a) General Exhibit / Information Booth Option
(includes registration for two people)

i) Type

Business Non Profit

ii) Full Name . Exhibitor #1

iii) Full Name . Exhibitor #2

2b) Booth Activities / Interactive Hands On Demos

Please describe the demonstrations & booth activities you will have:

Exhibit Setup Times

Exhibit Hours (each day):

Oct 1, 2 - 11:30am . 3:00pm
Oct 3 . 10:00am . 1:00pm

Setup / Breakdown

6am . 8:30am
1pm . 3pm

3) Referral Code (please enter referral code if applicable)

4) Target Audiences

- Elementary Students Middle/High School Students College Students Adults / Parents Schools / School Systems
 Businesses / Corporations Industry Professionals Other _____

5) Career Industries (check all that apply)

- | | | | | |
|---|--|---|--------------------------------------|--|
| <input type="checkbox"/> Architecture | <input type="checkbox"/> Cosmetology | <input type="checkbox"/> Finance | <input type="checkbox"/> Journalism | <input type="checkbox"/> Social / Human Services |
| <input type="checkbox"/> Arts & Entertainment | <input type="checkbox"/> Culinary Arts | <input type="checkbox"/> Government | <input type="checkbox"/> Law / Legal | <input type="checkbox"/> Sports |
| <input type="checkbox"/> Automotive | <input type="checkbox"/> Education | <input type="checkbox"/> Healthcare | <input type="checkbox"/> Military | <input type="checkbox"/> Other |
| <input type="checkbox"/> Business | <input type="checkbox"/> Engineering | <input type="checkbox"/> Hospitality | <input type="checkbox"/> Non Profit | |
| <input type="checkbox"/> Communications | <input type="checkbox"/> Fashion | <input type="checkbox"/> Information Technology | <input type="checkbox"/> Real Estate | |

6) What types of resources and/or information will you providing at your table(s)?

- | | | |
|--|--|---|
| <input type="checkbox"/> Job / Internship / Career Opportunity | <input type="checkbox"/> Hands-On Experience | <input type="checkbox"/> Summer Program / After School Program Info |
| <input type="checkbox"/> Networking Contacts / Candidates | <input type="checkbox"/> Scholarship / College Info | <input type="checkbox"/> Mentors / Role Models / Tutors |
| <input type="checkbox"/> Career Plan Assistance | <input type="checkbox"/> Workforce Development Solutions | <input type="checkbox"/> Financial Aide / Financial Mgmt Assistance |
| <input type="checkbox"/> Economic Dev. Solutions | <input type="checkbox"/> Personal Development Training | <input type="checkbox"/> Professional Development Training |
| | | <input type="checkbox"/> Other |

7) Registration Details

Select The Conference Day(s) You Are Exhibiting:

- Oct 1 – Annual Workforce & Economic Development Conference (AWEDC)**
(Industry Prof. / Corporations/ Non Profits General Community)
- Oct 2 – Annual Career & Professional Development (Part 1) (ACPDC)**
(Industry Prof. / Corporations / General Community
Non Profits / Schools / Colleges / Youth)
- Oct 3 - Annual Career & Professional Development (Part 2) (ACPDC)**
(General Community)
Young Innovators Competitions & Expo

8) Registration Fee

Rate	Business	Non Profit	High Schools	Total
<input type="checkbox"/> 1 Day Rate (Oct 1, Oct 2 or Oct 3)	\$500	\$350	Free	_____
<input type="checkbox"/> 2 Day Rate (Any two consecutive days)	\$900	\$600	Free	_____
<input type="checkbox"/> Full Rate	\$1300	\$850	Free	_____

Total Registration Fee: _____

Method of Payment

- American Express Master Card Visa Check / Money Order (Make Payable to EduSerc, Inc.)

Name of Cardholder: _____

Billing Address: _____

Credit Card Number: _____

Billing City/State/Zip: _____

Expiration Date: _____ / _____

Billing Phone: _____

ACPD/ AWEDC2009

Rev. Aug 2009
EduSerc, Inc.

Interactive Community Registration

For Official Use:
Date Received:

Instructions: Complete this form in its entirety and **mail the form** to EduSerc, Inc. 1040 West Street Laurel MD 20707 or **fax the form** to 301-362-4360.

1) Individual & Organization Information

1a Full name

1b Organization Name

1c Job Title / Occupation (if applicable)

1d Mailing Address (room, apt, suite no, P.O. box)

1e City, State, Zip Code

1f County or municipality

1g Phone

1h Fax

1i Email

2a) General Exhibit / Information Booth Option
(includes registration for two people)

i) Type

Business Non Profit

ii) Full Name . Exhibitor #1

iii) Full Name . Exhibitor #2

2b) Booth Activities / Interactive Hands On Demos

Please describe the demonstrations & booth activities you will have:

Exhibit Setup Times

Exhibit Hours (each day):

Oct 1, 2 - 11:30am . 3:00pm
Oct 3 . 10:00am . 1:00pm

Setup / Breakdown

6am . 8:30am
1pm . 3pm

3) Referral Code (please enter referral code if applicable)

4) Target Audiences

- Elementary Students Middle/High School Students College Students Adults / Parents Schools / School Systems
 Businesses / Corporations Industry Professionals Other _____

5) Career Industries (check all that apply)

- Architecture Cosmetology Finance Journalism Social / Human Services
 Arts & Entertainment Culinary Arts Government Law / Legal Sports
 Automotive Education Healthcare Military Other
 Business Engineering Hospitality Non Profit
 Communications Fashion Information Technology Real Estate

6) What types of resources and/or information will you providing at your table(s)?

- Job / Internship / Career Opportunity Hands-On Experience Summer Program / After School Program Info
 Networking Contacts / Candidates Scholarship / College Info Mentors / Role Models / Tutors
 Career Plan Assistance Workforce Development Solutions Financial Aide / Financial Mgmt Assistance
 Economic Dev. Solutions Personal Development Training Professional Development Training
 Other

7) Registration Details

Select The Conference Day(s) You Are Exhibiting:

- Oct 1 – Annual Workforce & Economic Development Conference (AWEDC)**
(Industry Prof. / Corporations/ Non Profits General Community)
 Oct 2 – Annual Career & Professional Development (Part 1) (ACPD)
(Industry Prof. / Corporations / General Community
Non Profits / Schools / Colleges / Youth)
 Oct 3 - Annual Career & Professional Development (Part 2) (ACPD)
(General Community)
Young Innovators Competitions & Expo

8) Registration Fee

Rate	Neighborhood		City	
	Business	Non Profit	Business	Non Profit
<input type="checkbox"/> 1 Day Rate (Oct 1, Oct 2 or Oct 3)	\$7,000	\$5,500	\$12,000	\$9,000
<input type="checkbox"/> 2 Day Rate (Any two consecutive days)	\$12,000	\$9,000	\$18,000	\$14,000
<input type="checkbox"/> Full Rate	\$18,000	\$14,000	\$28,000	\$22,000

Please check the box above and list the total registration fee below

Total Registration Fee: _____

Method of Payment

- American Express Master Card Visa Check / Money Order (Make Payable to EduSerc, Inc.)

Name of Cardholder: _____

Billing Address: _____

Credit Card Number: _____

Billing City/State/Zip: _____

Expiration Date: _____ / _____

Billing Phone: _____

**ACPDC/
AWEDC2009**

Rev. Sep 2009
EduSerc, Inc.

Sponsorship Form

For Official Use:
Date Received:

Instructions: Complete this form in its entirety and **mail the form** to EduSerc, Inc. 1040 West Street Laurel MD 20707 or **fax the form** to 301-362-4360.

1) Individual & Organization Information

1a Full name

1b Organization Name

1c Job Title / Occupation (if applicable)

1d Mailing Address (room, apt, suite no, P.O. box)

1e City, State, Zip Code

1f County or municipal

1g Phone

1h Fax

1i Email

1j Web Address (if applicable)

2) Sponsor Designation

i) Specify your type of sponsorship

General Sponsor In-Kind / Activity Sponsor

3) Organization Overview

(2 - 3 sentences about your organization)

3) Referral Code (please enter referral code if applicable)

4) Target Audiences For Your Business

Elementary Students Middle/High School Students College Students Adults / Parents Schools / School Systems

5) Please describe the items, supplies or equipment you will provide.

6) Please describe any other types of contributions.

7) Sponsorship Selection

Conference Sponsorship	Sponsorship	Other Amount	Total
Ultimate	<input type="checkbox"/> \$50,000		
Diamond	<input type="checkbox"/> \$30,000		
Platinum	<input type="checkbox"/> \$20,000		
Gold	<input type="checkbox"/> \$10,000		
Silver	<input type="checkbox"/> \$5,000		
Bronze	<input type="checkbox"/> \$2,500		
School Bus Sponsorship (including bus & registration)	<input type="checkbox"/> \$2,500		
Industry Competitions	<input type="checkbox"/> \$1,000		
Other Sponsorship _____	<input type="checkbox"/> _____		
in-Kind Donations (explain)			

Other Sponsorship Items*

*refer to sponsorship details for pricing for each

Conference Magazine Advertisement
Please list page size: _____: Color or B/W _____

Room Rental (Training/Networking)
of rooms: _____ List Date(s) or Full Rate: _____

Registration / Workshop Sponsor
Please circle: Registration | Workshop | Both

Luncheon Sponsor
Please circle: Oct 1 | Oct 2 | Oct 3 | Custom Lunch

Media Sponsor
Circle spot: 30 sec | 60 sec spot # of spots: _____

Workforce Development Sponsor
of rooms: _____ List Date(s) or Full Rate: _____

EduSerc Awards Sponsor
of Tickets: _____ # of Tables(10 seats): _____

Total

Method of Payment

Master Card Visa AMEX Check / Money Order (Make Payable to EduSerc, Inc.)

Name of Cardholder: _____

Billing Address: _____

Credit Card Number: _____

Billing City/State/Zip: _____

Expiration Date: _____ / _____ Security Code: _____

Billing Phone: _____